



Maps

# 22500 LAKELAND

***FOR LEASE***

*22500 Lakeland Blvd.*

*Euclid, OH 44132*

## 22500 LAKELAND BLVD EUCLID, OH

### HIGHLIGHTS:

PPN: 647-03-001

Land: .418 Acres

Frontage/Property Depth: 166.8'/ 116.6'

Zoned U-6: Industrial and Manufacturing

Building size: 6,000 sf

Year Built: 1987

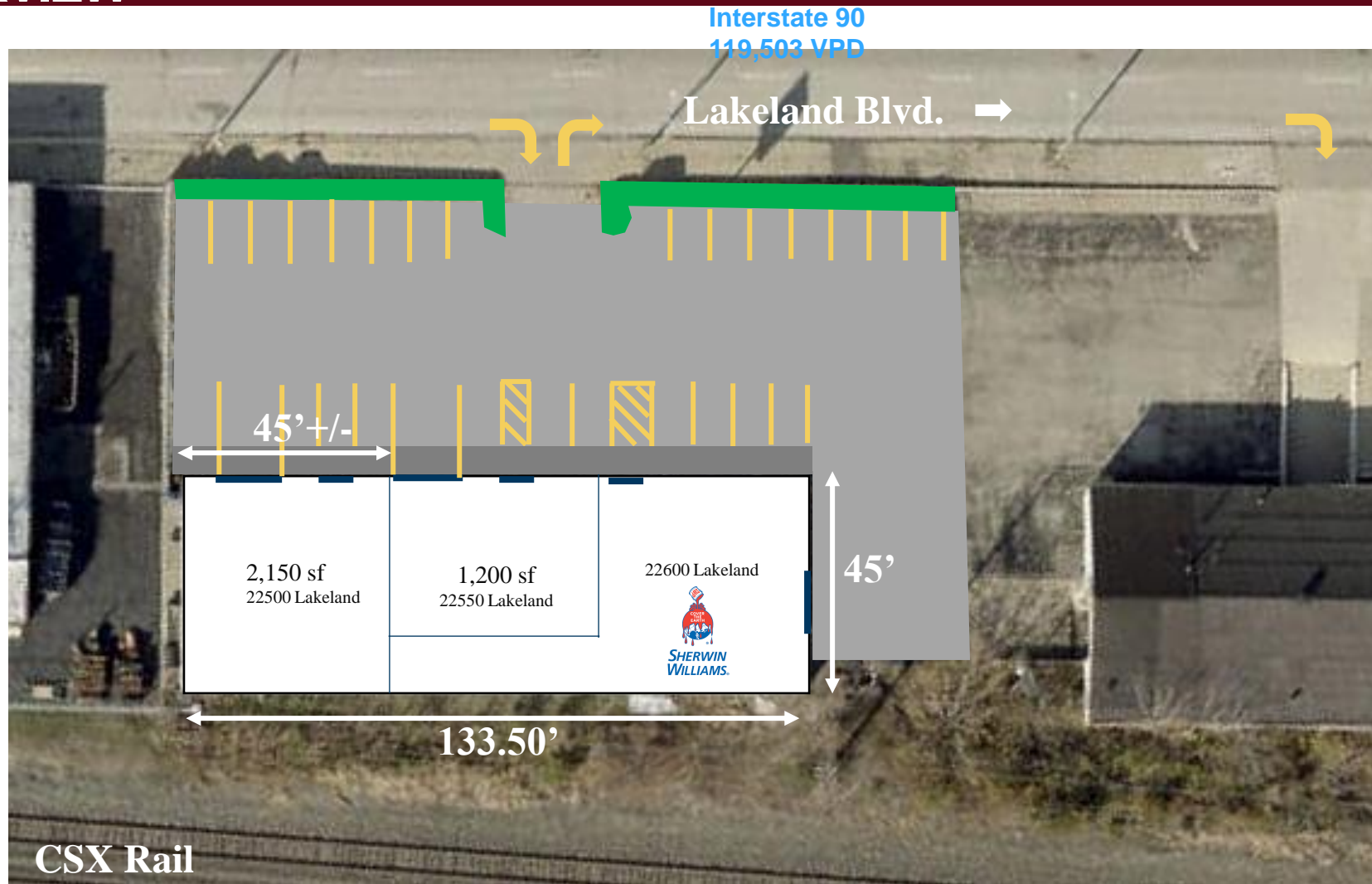
Ceiling Heights: 14'

**Example Uses:** Financial admin and professional offices, R&D lab and testing, business school, trade school, ambulance service, automobile repair and body shops, auto and truck rental, auto sales and leasing, towing and wrecking, day care\*, equipment sales and rent, painting and woodworking, contractor trade facility, welding shop, food and beverage manufacturing, light manufacturing,

### DEMOGRAPHICS

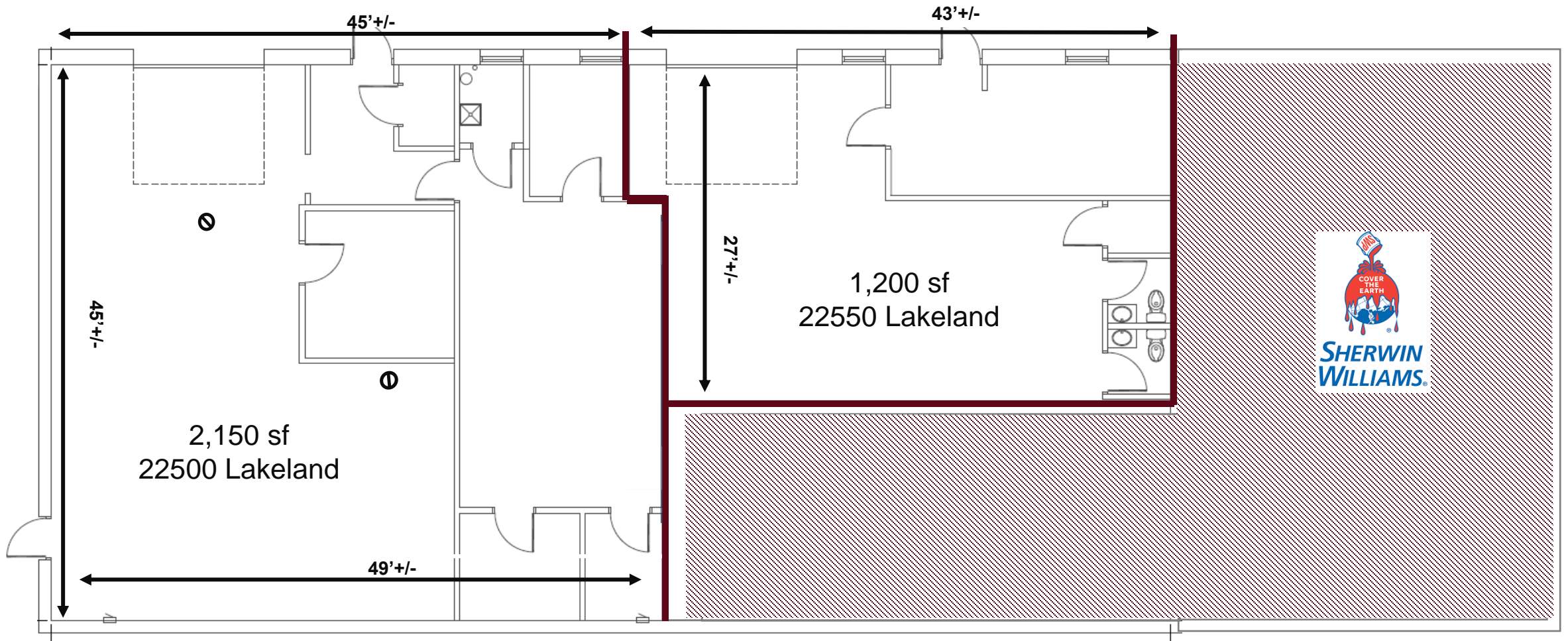
POPULATION	1 MILE	3 MILE	5 MILE
2021 Households	4,477	37,701	79,603
2021	10,301	81,816	178,429
INCOME	1 MILE	3 MILE	5 MILE
2020 Average	\$47,686	\$51,048	\$60,755
2020 Median	\$40,194	\$38,355	\$44,689
Housing	1 MILE	3 MILE	5 MILE
Median Home Value	\$62,909	\$90,311	\$122,497

# SITE PLAN OVERVIEW



\*to be field measured

# FLOOR PLAN OVERVIEW



\*ALL MEASUREMENTS ARE APPROXIMATE AND ARE TO BE FIELD VERIFIED BY TENANT

# BUILDING SETBACKS

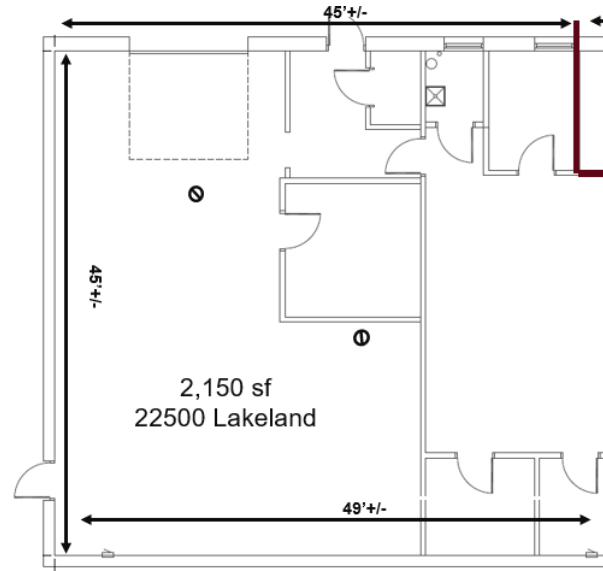
## OVERVIEW



# SPACE AVAILABILITY NOTES

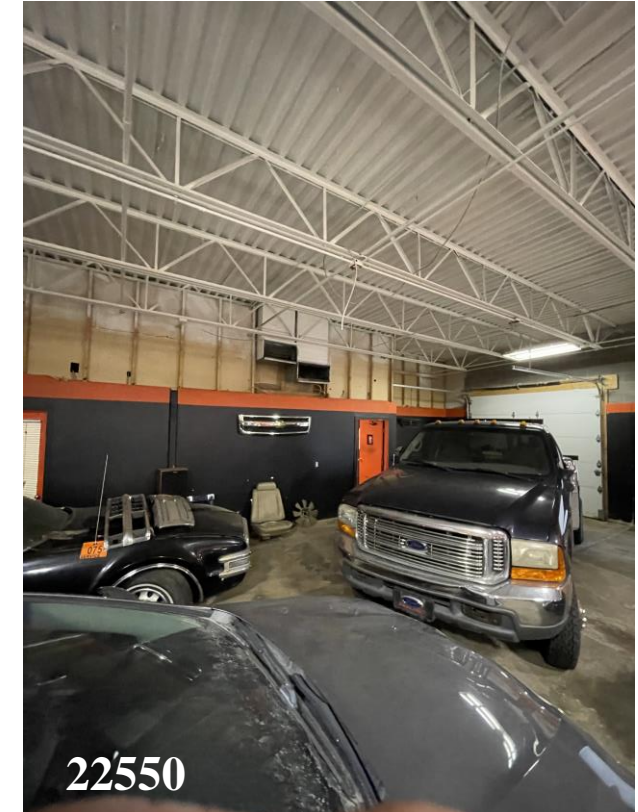
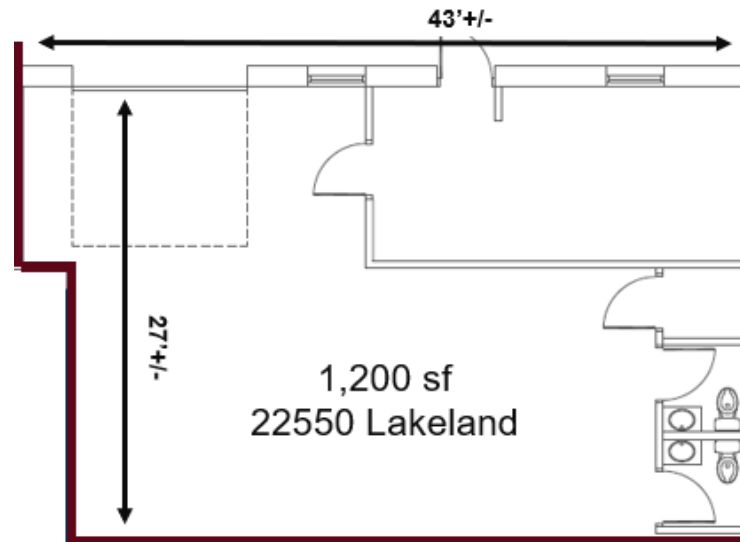
## 22500 LAKELAND

- 2,150 sf
- One 10' garage door
- Entry and rear [side] door
- Two (2) floor drains
- Large open ceiling warehouse
- Remaining broken into office
- Has utility sink, toilet can be added
- Reznor Heater

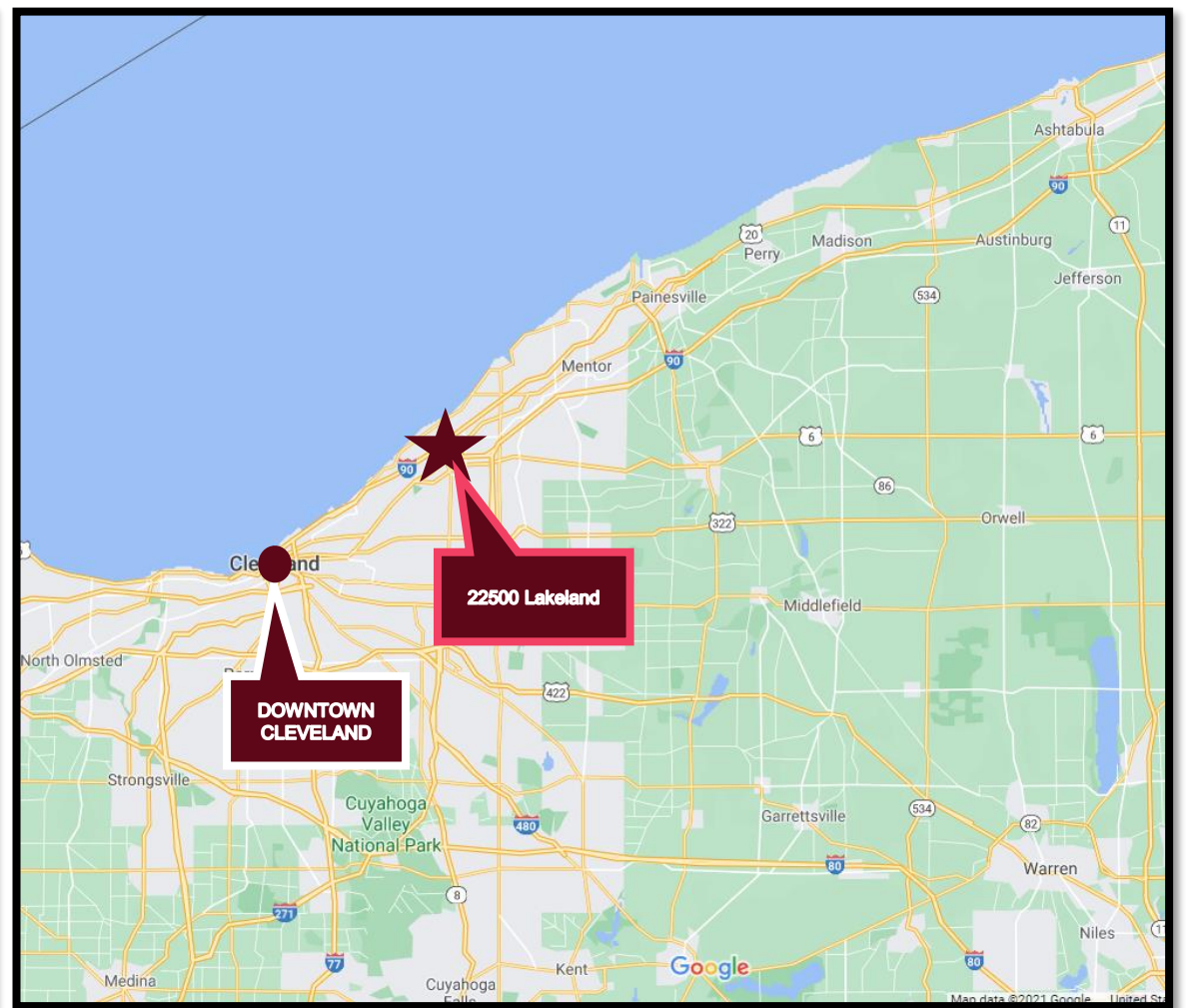
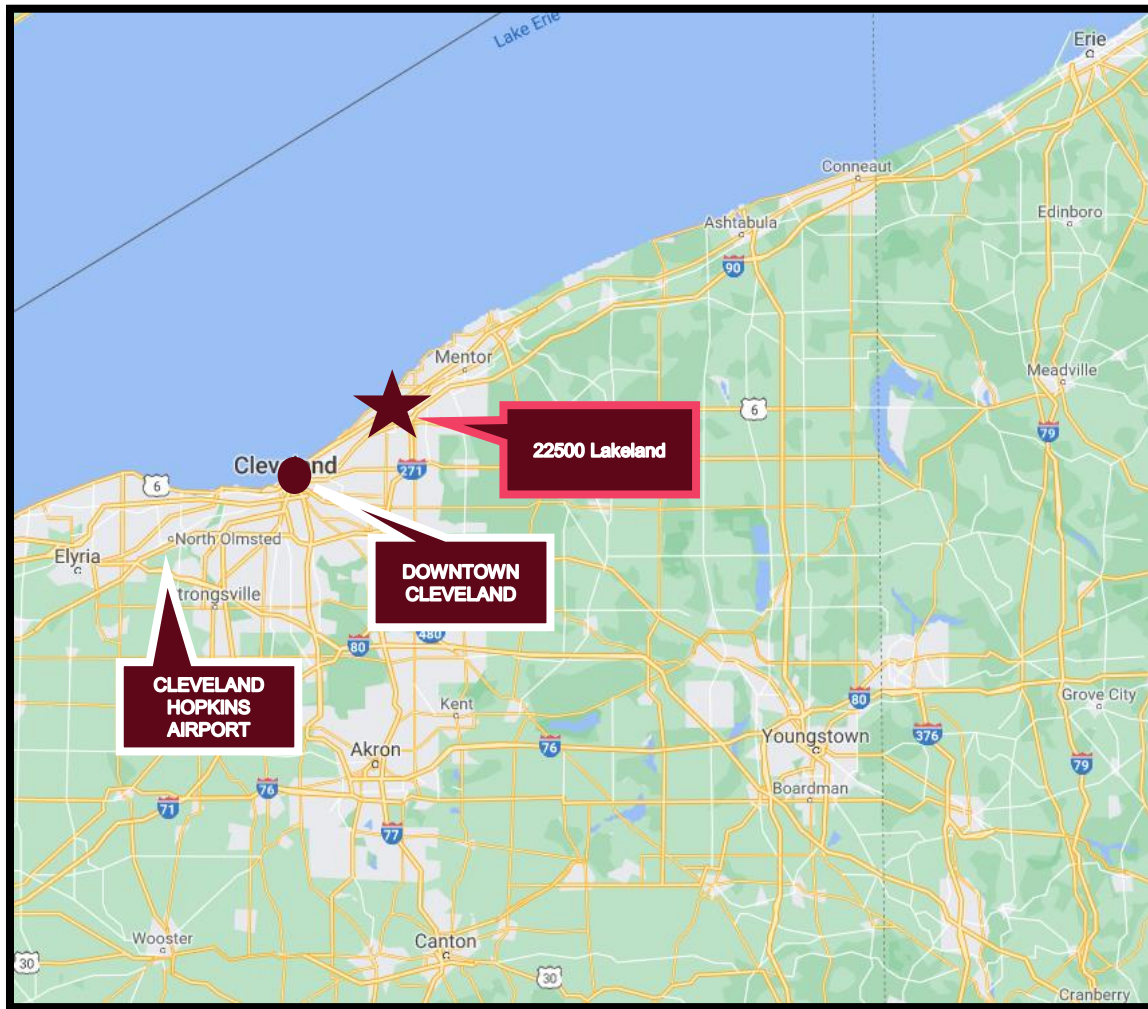


## 22550 LAKELAND

- 1,200 sf
- One 10' garage door
- Front entry door
- Small office at entrance
- Large open ceiling warehouse
- Two (2) bathrooms



# LOCATION MAPPING



# FOR MORE INFO

Michael DiFranco



📞 *216 736 8000*

✉ *michael@difrancoCRE.com*

🌐 *www.difrancoCRE.com*